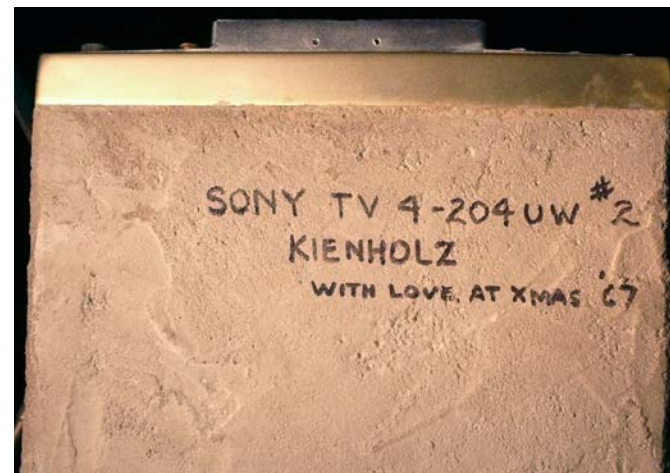


**ED  
WARD**

**KIEN**

**HOLZ**



**Untitled (Sony TV 4-204UW #2), 1967**

Concrete and Sony exterior parts.

3 x 9 x 6 1/4 inches.

Signed, dated, and dedicated on the bottom. Maquette.



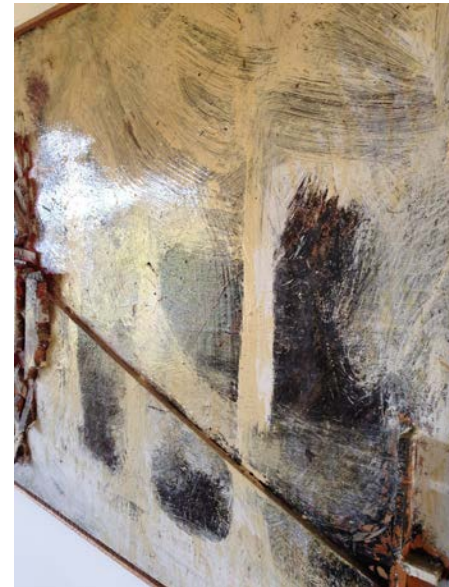
**Untitled, 1968**

Concrete and clock face.

3 1/4 x 3 1/4 x 2 3/8 inches.

Signed and dated on the bottom. Maquette.





**Untitled (Broom Painting), (n.d.)**

Mixed Media.

34 inches x 5 feet, 10 1/4 inches.

Signed recto lower right by Kienholz.



**Untitled (Broom Painting), 1958**

Mixed Media.

48 7/8 x 30 1/8 inches.

Previously on view at the Los Angeles County Museum of Art.





**The Old Rugged Double-Cross, (n.d.)**

Mixed-media sculpture.

14 x 16 1/2 x 21 1/2 inches.



**\$9.00, \$10.00, \$11.00; 1969**

Watercolor on paper.

12 1/4 x 16 1/4 inches.

Frames designed and built by Kienholz.

Each image signed, dated, and thumbprinted by Kienholz.